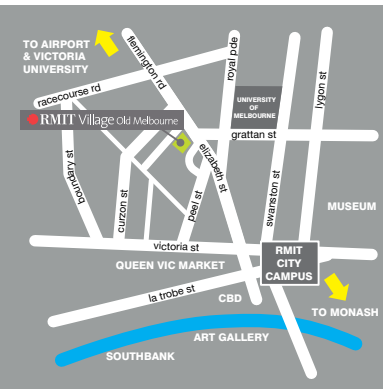


RMIT Village Old Melbourne



RMIT Village Old Melbourne is open to all students attending a higher education institution in Melbourne.

Location

Melbourne, Australia

RMIT Village Old Melbourne is located near the heart of Melbourne. It's a 5 minute tram ride to RMIT University and is just across the road from the University of Melbourne.

Accommodation

During 2005, an extensive refurbishment was completed to transform the 'Old Melbourne' hotel into modern day student accommodation. All apartments are revamped and completely furnished, featuring the latest materials and furniture.

Accommodation includes fully furnished, self catered apartments. Current rates available on our website.

All apartments include a modern bathroom, wardrobe, storage facilities, telephone and broadband internet lines, swivel-mounted flat screen monitors cabled for PC, DVD and TV use, study desks and mod chairs.

Student Life

The Residential Assistance Programme provides events and activities that encourage residents to mix, mingle and have fun.

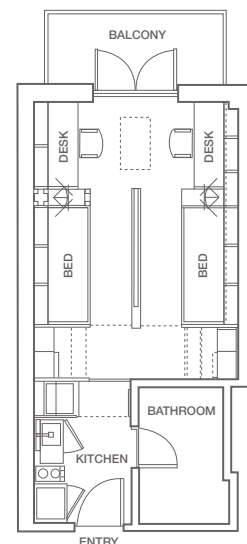
Facilities

The Village provides a refreshing, stimulating and comfortable environment for both living and studying. Facilities include:

- Resource Centre (fully equipped with the latest computers)
- Outdoor heated swimming pool
- Landscaped gardens
- Indoor gym
- Laundries
- Vehicle parking spaces
- Glasshouse Recreation Room
- Student Lounge

Typical Floorplan

2br studio apartment



INNOVATIVE STUDENT ACCOMMODATION

fully furnished, ultra modern apartments + heated pool + resource centre + plasma TVs

5-17 Flemington Rd, North Melbourne VIC 3051 Australia [email. info@rmitvillageom.com.au](mailto:info@rmitvillageom.com.au) [tel. +61 3 8330 2000](tel:+61383302000)

www.rmitvillageom.com.au

campus living villages **clv** www.clv.com.au

